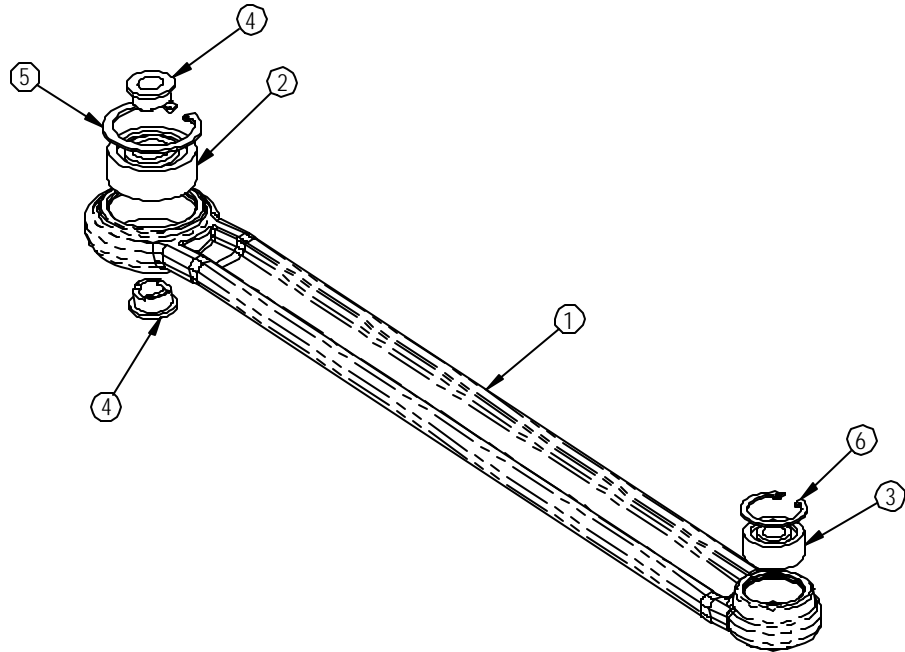


10 9 8 7 6 5 4 3 2 1

- NOTES:
 1. PRESS BEARING INTO LINK WITH HYDRAULIC PRESS.
 2. MUST USE BEARING PRESS TOOL TO APPLY FORCE TO OUTER RACE OF BEARING ONLY.

REVISIONS				
REV.	DATE	DESCRIPTION	ECO	BY
A	02/28/2007	RELEASE FOR PRODUCTION	11541	RLH



ITEM NO.	PART NUMBER	DESCRIPTION	Default/QTY.
1	020-6617-05	CAST, LOWER LINKAGE, TBT	1
2	130-1718	BEARING, BALL, SELF-ALIGN, 2204S	1
3	130-1717	BEARING, BALL, SELF-ALIGN, 2201S	1
4	020-6635	SPACER, SHOULDER, LOCKING, 20MM OD	2
5	140-3304	RING, RETAINER, INT,1.87X.062"	1
6	140-3303	RING, RETAINER, INT,1.25X.05"	1

**DOCUMENT STATUS:
RELEASE**

MATERIAL SEE BOM		TOLERANCES UNLESS OTHERWISE SPECIFIED X.XXX = ± .010" (0.25MM) ANGLES = ± 2° X.XX = ± .030" (0.76MM) FRACTIONS = ± 1/32 X.X = ± .050" (1.27MM) X. = ± .125" (3.20MM)		UNISEN, INC. DBA 14410 Myford Road Irvine CA 92606	
FINISH N/A		INITIAL	DATE	STARTRAC PART NO.	REV
VENDOR:		P/N:	U.O.M.	721-1130	A
NOTICE OF PROPRIETARY INFORMATION THIS DOCUMENT SHALL NOT BE REPRODUCED NOR SHALL THE INFORMATION CONTAINED HEREIN BE USED BY OR DISCLOSED TO OTHER EXCEPT AS EXPRESSLY AUTHORIZED BY UNISEN				TITLE ASSY, LOWER LINKAGE, TBT	
				SCALE: 1:4	SHEET 1 OF 1
				SHEET SIZE: A	

10 9 8 7 6 5 4 3 2 1